



More room for more payload...

Eaton's feed systems enable greater payload capacity to meet your satellite constellation needs.

Propulsion feed system solutions

- The flight-qualified Valve in Tank Assembly (VITA) eliminates feed system envelope by integrating valves directly into the tank
- VITA significantly reduces testing and integration effort
- Can be delivered pre-filled with propellant
- High quantity, space-grade production



**Valve in Tank Assembly (VITA)
electric propulsion feed system**

Propulsion components

- Regulators
 - Various fluid media (Xenon, Krypton, etc.)
 - Dual stage series redundant and single stage options
 - Precise regulation band
 - Compact and lightweight
- Gas pressurant and electric propellant tanks
 - Composite overwrapped pressure vessels
 - Lightweight and ultra-lightweight options
 - Low cost off-the-shelf solutions
- Miniature pyrovalve and service valve
 - Metal to metal primary seals
 - Lightweight
 - NO, NC Pyrovalves
 - NSI compatible
- Latching isolation valves
 - Position feedback
 - Low pressure
 - Low leakage
 - Low pressure drop



Xenon regulator



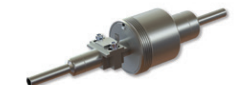
Composite pressurant tank



Integrated valve structure



**Mini pyrotechnic
and service valves**



Latching isolation valve

Eaton
1000 Eaton Boulevard
Cleveland, OH 44122
United States
Eaton.com

© 2021 Eaton
All Rights Reserved
Printed in USA
August 2021